

Product Introduction of Cloud Phone

Large-scale Automated Control, Enabling Smooth Interaction for One Person

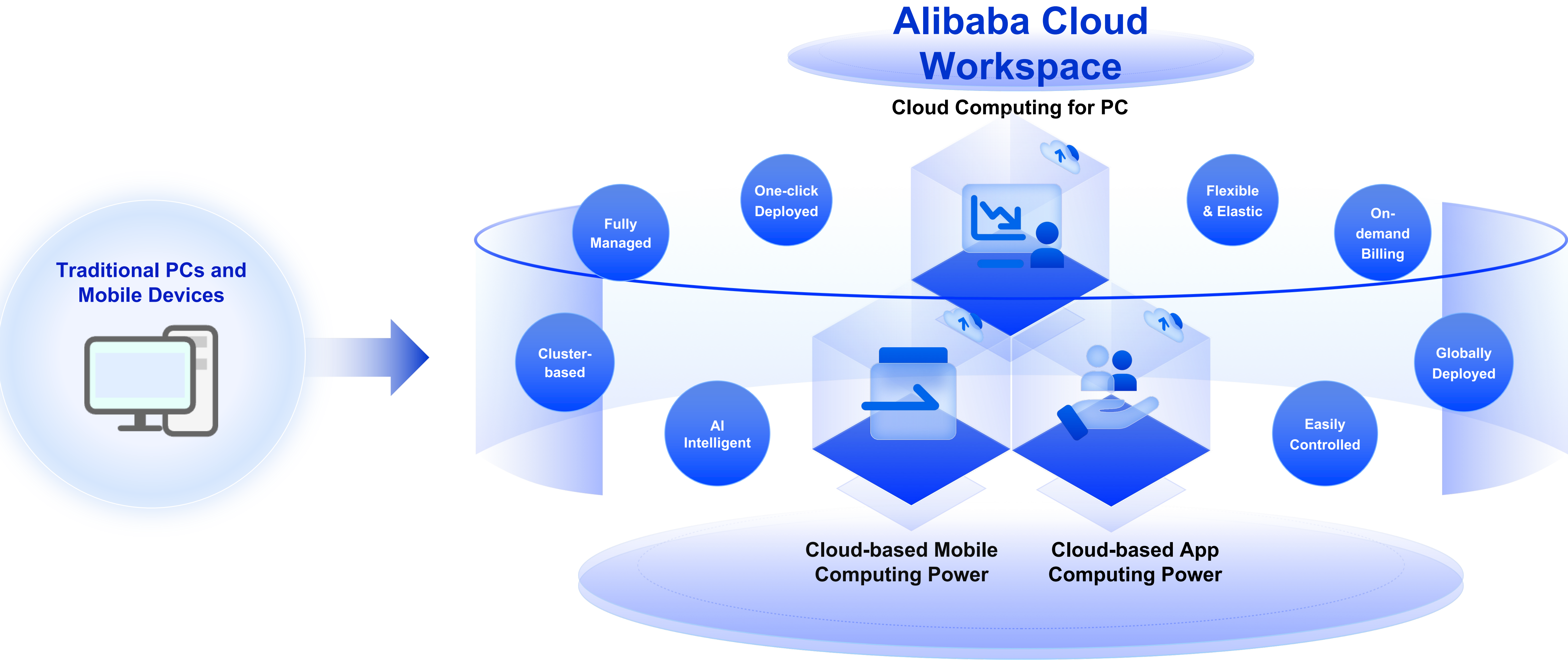
Managing Multiple Devices and Cross-platform Application Distribution

Contents

01 Overview

02 Key Features

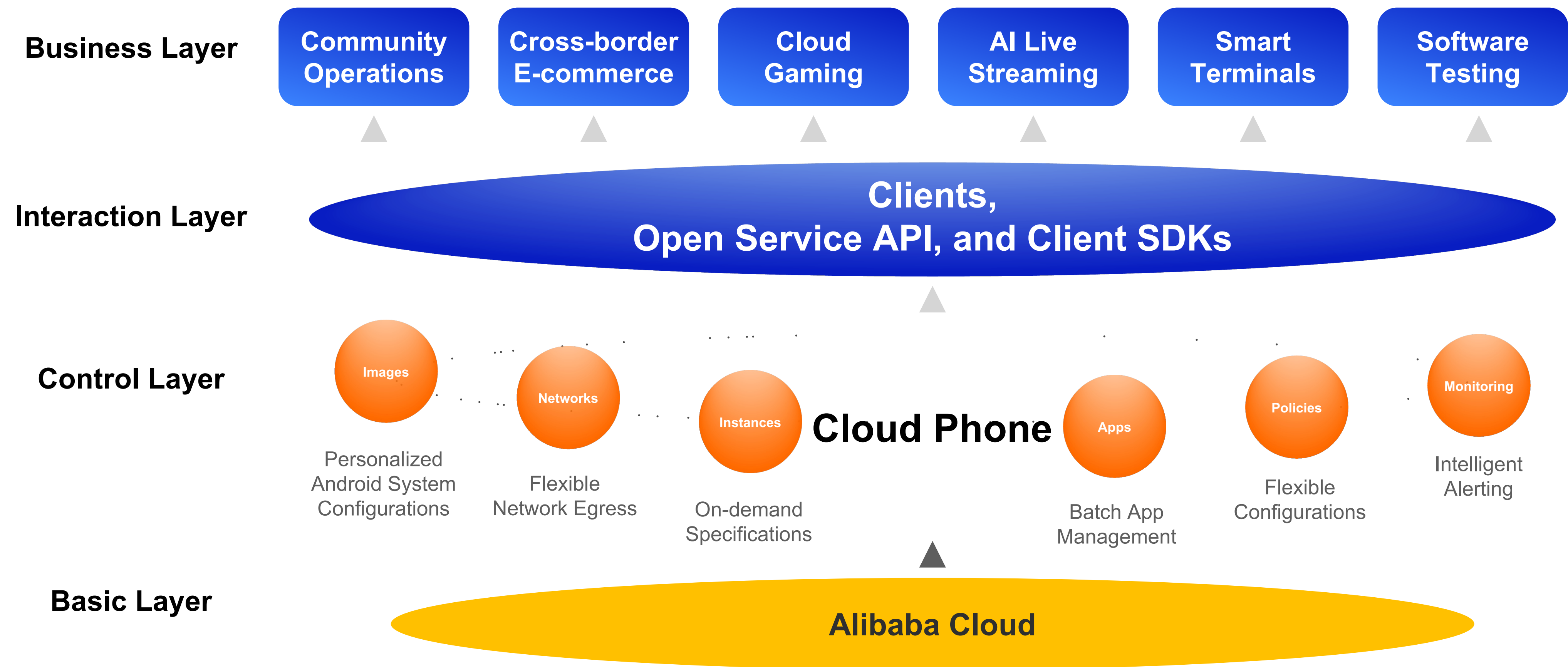
Alibaba Cloud Workspace: Make Cloud Computing within Reach



*Sources: "Report on the Digital Transformation Path of Small and Medium-sized Enterprises in 2022," "Report on Chinese Small and Medium-sized Enterprises' Cloud Migration in the First Three Quarters of 2023," and data centers

Business Architecture of Cloud Phone

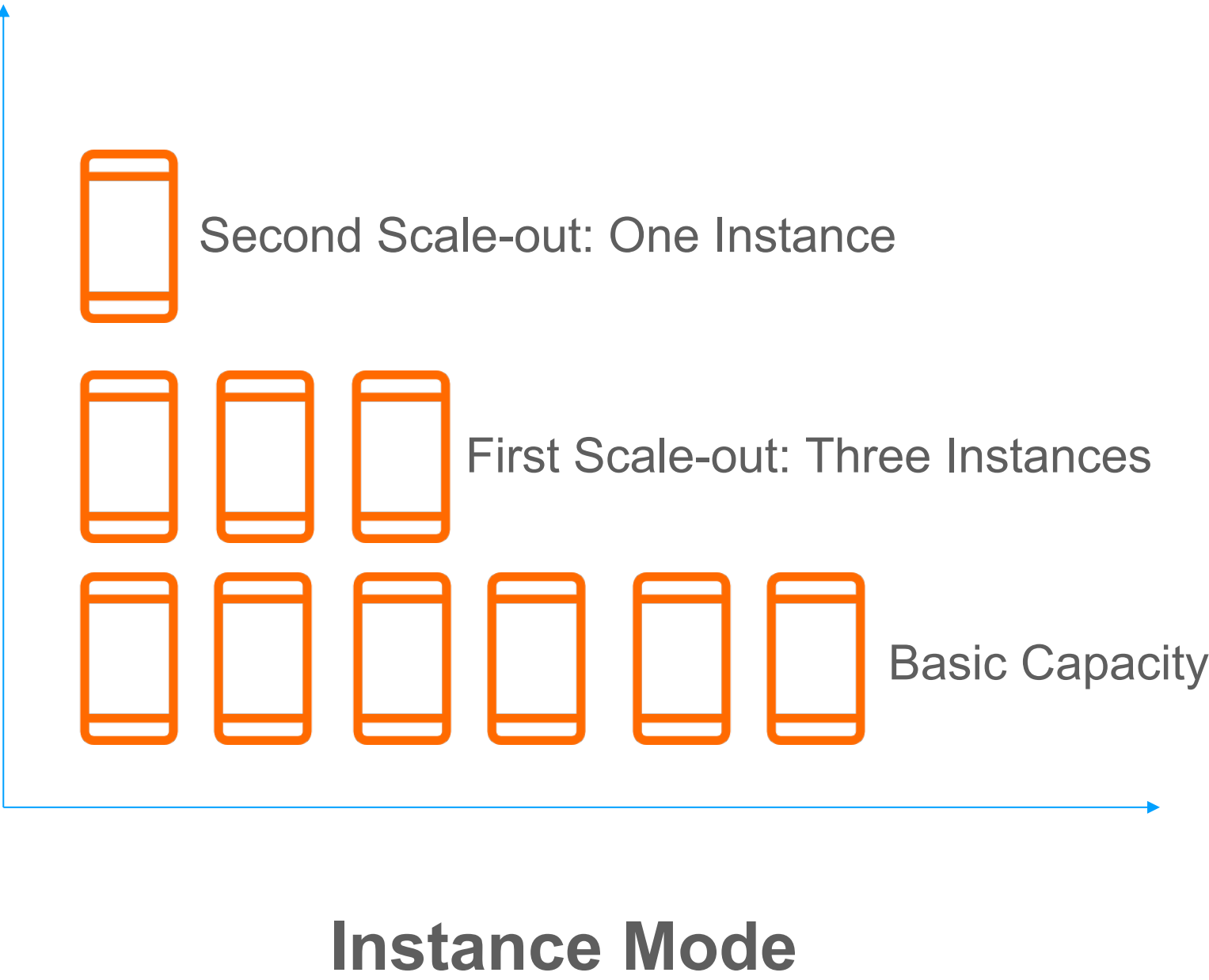
The Cloud Phone resource pool is built based on Alibaba Cloud, providing a variety of interactive modes to support implementation in scenarios such as community operations, cross-border e-commerce, cloud gaming, AI live streaming, smart terminals, and software testing.



Sales Forms of Cloud Phone

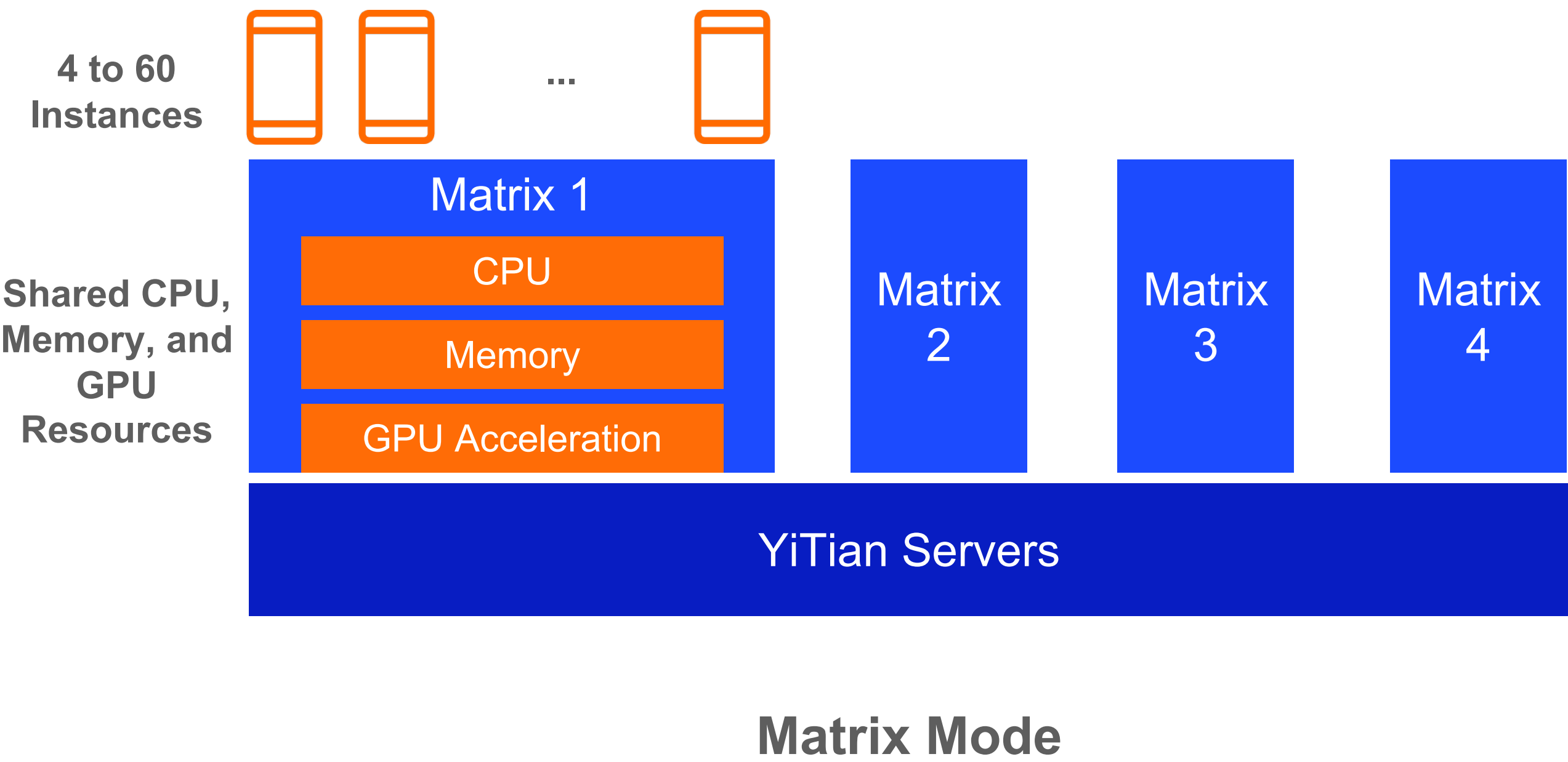
Cloud Phone instance: allows you to scale out instances. The minimum specifications of an instance are 2 CPU cores and 4 GB of memory.

On-demand billing: supports subscription and pay-as-you-go to flexibly adapt to business scenarios.



Cloud Phone matrix: allows you to purchase instances by matrix. Each matrix contains a total of 40 CPU cores and 120 GB of memory.

Subscription: supports 4 to 60 instances. The number of instances per matrix can be selected based on actual loads.

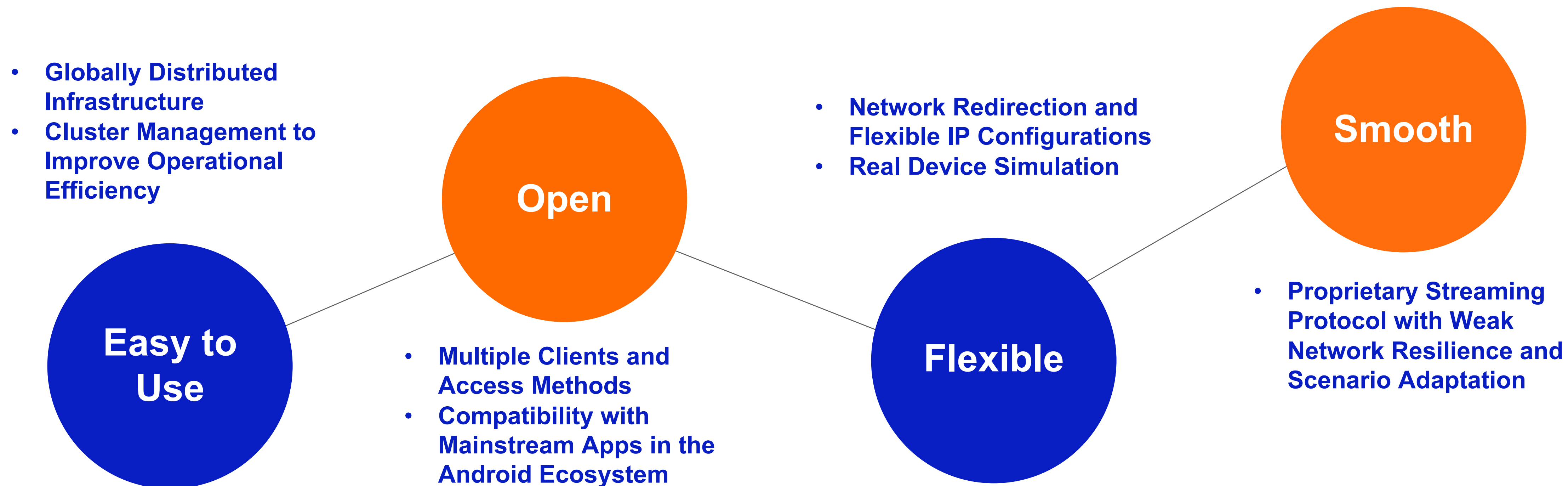


Contents

01 Overview

02 Key Features

Key Features of Cloud Phone



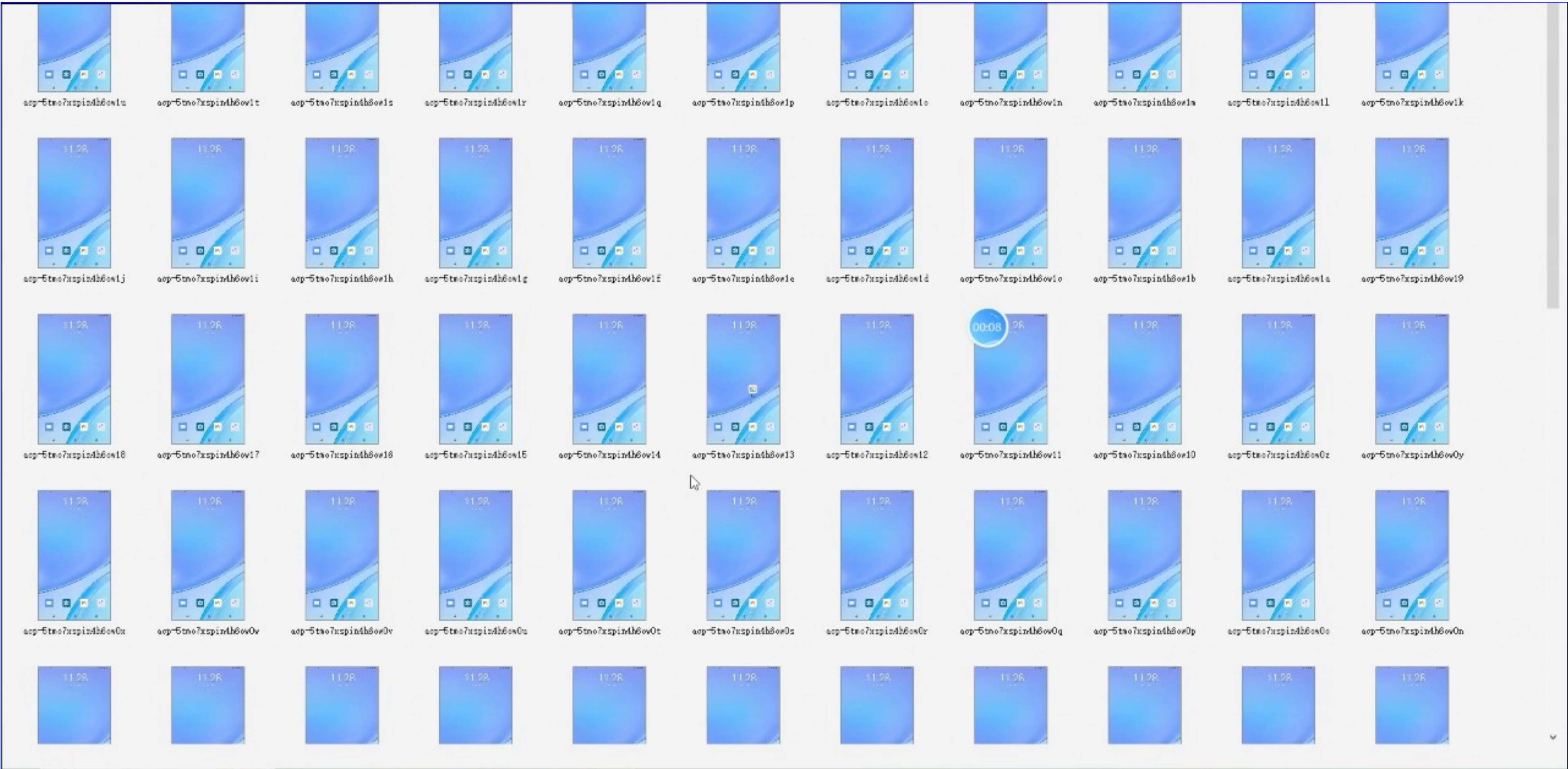
Easy to Use: Globally Distributed Infrastructure

Cloud Phone supports the following regions: China (Hangzhou), China (Shanghai), China (Beijing), China (Shenzhen), **Singapore, China (Hong Kong), and Germany (Frankfurt)**. As business expands, Cloud Phone will gradually become available in other regions.



Easy to Use: Cluster Management to Improve Operational Efficiency

Provides an SDK for managing clusters to improve operational efficiency.



Open: Multiple Clients and Access Methods to Meet Diverse Scenario Needs

Supports multiple clients and access methods to meet customer needs in diverse business scenarios. Supported clients include PC, mobile, web, and hardware terminals. Supported connection and operation methods include console, API, SDK, and ADB.



Windows



Mac



iOS



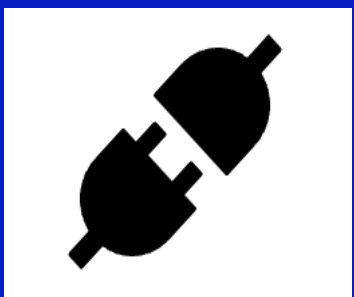
Android



Web



Console



API



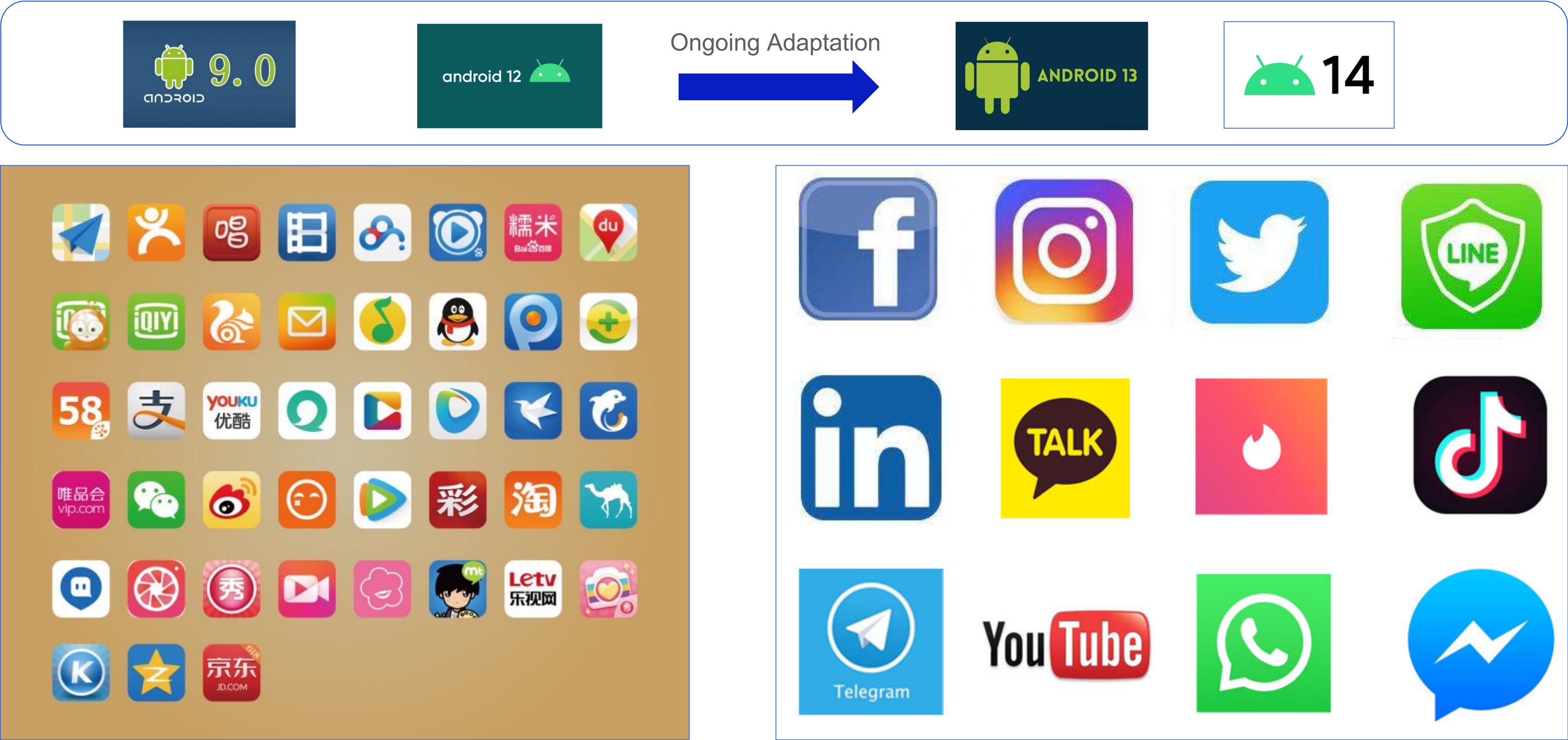
SDK



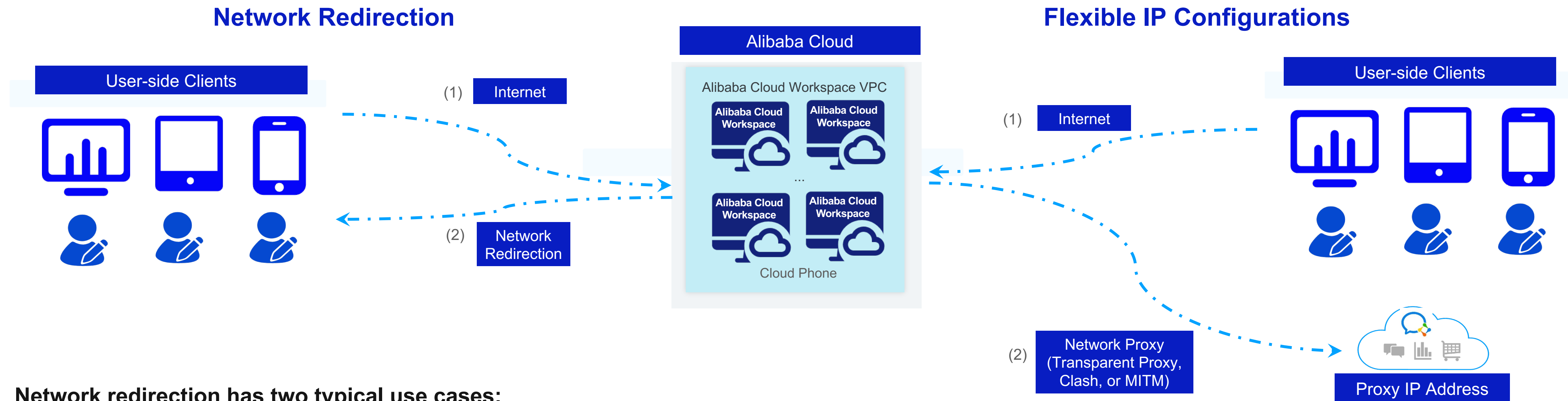
ADB

Open: Compatibility with Mainstream Apps in the Android Ecosystem

Supports Android 9 and Android 12 images, with ongoing adaptation to Android 13 and Android 14 images.



Flexible: Network Redirection and Flexible IP Configurations

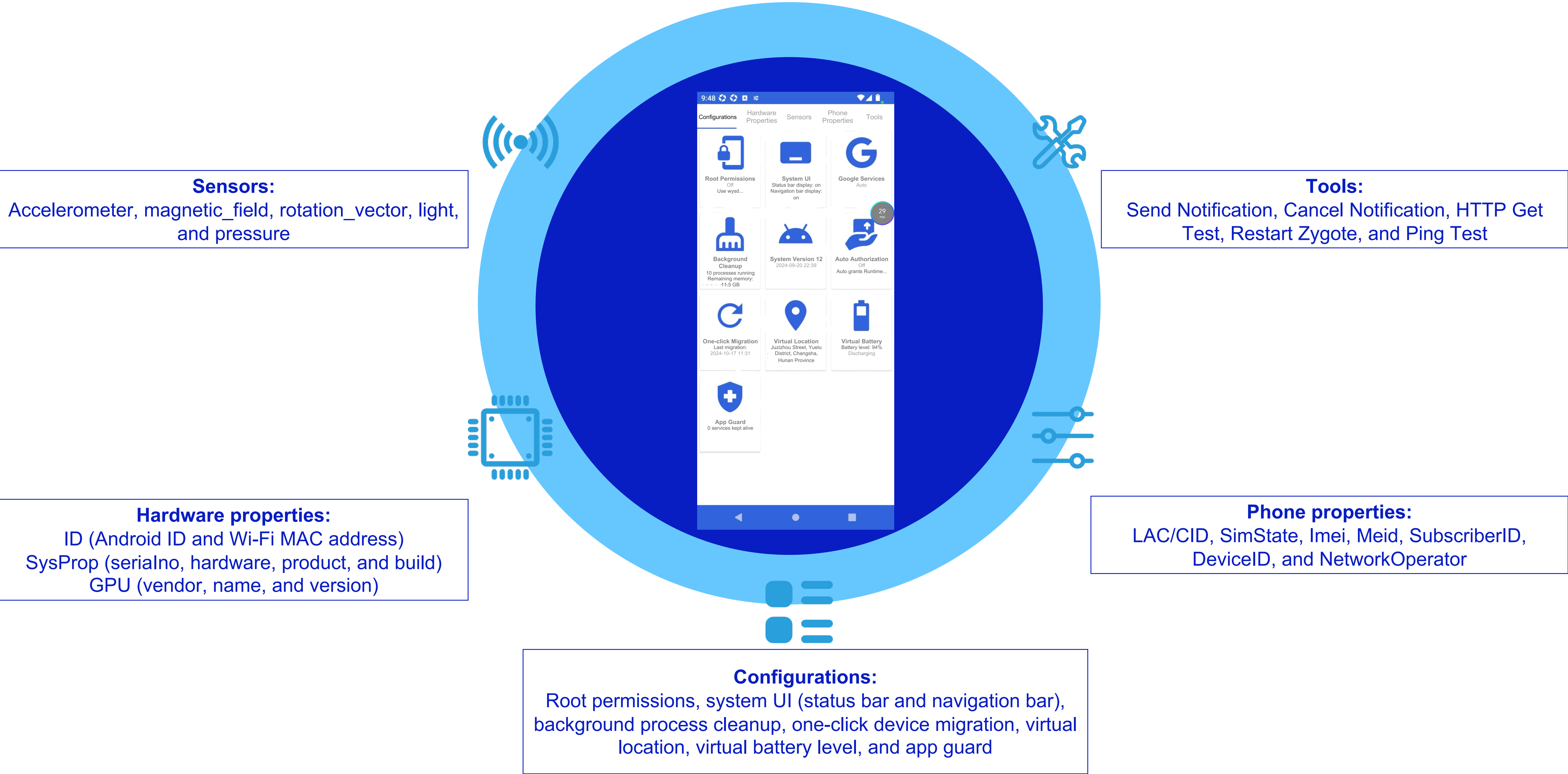


Network redirection has two typical use cases:

1. To determine whether an app's network control is dependent on IP addresses, the network redirection feature can be enabled to replace the IP address of the data center with the IP address of a client. If the app changes from an abnormal state to a normal state, it can be confirmed that the app is affected by IP address-based network control.
2. Network redirection supports a one-to-N pattern. If network redirection is enabled on a Cloud Phone instance, other Cloud Phone instances can use this instance as their network egress, thereby reducing client-side resource consumption.

For scenarios such as community operations and advertising that require third-party IP addresses, flexible IP proxying can be achieved by using methods such as transparent proxies, Clash, or MITM.

Flexible: Comprehensive Real Device Simulation



Smooth: Proprietary Streaming Protocol with Weak Network Resilience and Scenario Adaptation

阿里云智能集团
ALIBABA CLOUD INTELLIGENCE GROUP



Resistant to jitter (jitter: 150 ms):
Video playback remains smooth.

Resistant to packet loss (packet loss rate: 30%):
Audio playback latency is less than 300 ms, ensuring
clear and continuous calls.
Video playback remains smooth with a freeze rate of
approximately 5.4%, compared with a competitor
product's freeze rate of about 16%.

Resistant to bandwidth throttling (less than 2 Mbit/s):
Video playback remains normal with a freeze rate less
than 3% and no screen blurring or artifacts.

Weak Network Resilience

Counteracts packet loss, jitter, and insufficient bandwidth to adapt to unstable public network environments.

Bandwidth Prediction

Multiple Transmission
Protocols

Congestion Control

Scenario Adaptation

Adapts to user operation scenarios, balancing smoothness and clarity.

Audio and Video Scenarios
Audio MOS > 4.0
Audio Latency < 170 ms

Social Scenarios
PSNR: 50+ dB

Cloud

Cloud-based Host &
Rendering and Encoding

Network

Weak Network Resilience

Terminal

Multi-terminal Coverage
& Real-time Interaction

Multi-guest
System

Rendering and
Encoding Calculation
vCPU vGPU

windows ubuntu/UOS

Multiple
Transmission
Protocols

ASP 2.0

Transmission Protocol
display audio cursor usb input

Multi-terminal
System



Other Features

No.	Feature	Description
1	More economical	Supports free interaction traffic between clients and Cloud Phone instances. Provides a free shared Internet bandwidth of 5 Mbit/s.
2	More secure	Provides comprehensive security control policies based on the cloud security system of Alibaba Cloud, and supports VPCs and security groups.
3		Provides multiple backup options, including full-device backup, app backup, and file backup.
4	More convenient	Supports virtual cameras, virtual microphones, clipboard sharing, adaptive screen resolution, and multi-touch event handling.
5		Supports card-style status display for Cloud Phone instances.
6		Supports resource monitoring at both the instance level and instance process level.
7	...	Continuously increasing.

THANKS